



**Water Monitoring Result at C1 - HKCEC Extension
Mid-Flood Tide**

Date	Time	Weather Condition	Sampling Depth	m	Water Temperature			pH			Salinity		DO Saturation		DO		Turbidity		Suspended Solids					
					°C			-			ppt		%		mg/L		NTU		mg/L					
					Value	Average		Value	Average		Value	Average	Value	Average	Value	Average	Value	Average	Value	Average				
28/1/19	12:20	Fine	Middle	3.0	18.50	18.50	18.50	8.31	8.31	8.32	31.08	31.08	31.09	102.1	102.3	102.1	7.95	7.97	7.95	2.53	2.54	2.55	5	5.50
	12:22		Middle	3.0	18.50	18.50		8.32	8.32		31.09	31.09		102.3	101.8		7.96	7.92		2.55	2.56		6	
30/1/19	14:50	Fine	Middle	3.0	18.80	18.80	18.80	8.40	8.40	8.41	31.04	3.04	24.04	104.4	105.4	105.0	8.09	8.16	8.13	2.67	2.62	2.67	5	5.50
	14:52		Middle	3.0	18.80	18.80		8.41	8.41		31.04	31.04		105.1	105.0		8.13	8.13		2.68	2.69		6	
1/2/19	16:25	Cloudy	Middle	3.0	18.40	18.40	18.40	7.90	7.90	7.91	32.06	32.06	32.06	107.6	107.4	106.7	8.35	8.34	8.28	3.06	3.07	3.04	3	3.50
	16:27		Middle	3.0	18.40	18.40		7.91	7.91		32.06	32.06		106.9	104.9		8.29	8.14		2.99	3.04		4	
4/2/19	7:45	Foggy	Middle	2.5	19.80	19.80	19.80	8.34	8.34	8.34	30.23	30.23	30.23	74.4	77.8	77.7	5.68	5.94	5.93	5.06	5.55	5.31	3	2.50
	7:46		Middle	2.5	19.80	19.80		8.34	8.34		30.23	30.23		79.4	79.1		6.06	6.04		5.60	5.01		2	
8/2/19	11:35	Fine	Middle	3.0	20.40	20.40	20.40	8.04	8.04	8.05	31.45	31.45	31.45	95.6	95.9	97.5	7.39	7.41	7.41	3.19	3.18	3.20	4	4.50
	11:37		Middle	3.0	20.40	20.40		8.05	8.05		31.44	31.44		99.2	99.2		7.42	7.43		3.20	3.21		5	
11/2/19	10:50	Cloudy	Middle	3.0	19.00	19.00	19.00	7.95	7.95	7.95	32.22	32.22	32.24	96.9	96.9	97.1	7.42	7.42	7.43	2.25	2.60	2.45	3	3.50
	10:52		Middle	3.0	19.00	19.00		7.95	7.95		32.25	32.25		96.9	97.5		7.42	7.46		2.50	2.43		4	
13/2/19	11:40	Fine	Middle	3.0	19.90	19.90	19.90	8.00	8.00	8.01	32.61	32.61	32.61	97.1	96.8	97.2	7.30	7.28	7.30	1.79	1.79	1.80	2	2.00
	11:42		Middle	3.0	19.90	19.90		8.02	8.02		32.61	32.61		97.4	97.3		7.31	7.30		1.80	1.81		2	
15/2/19	11:50	Fine	Middle	3.0	20.80	20.80	20.85	7.66	7.66	7.67	33.10	33.10	33.11	102.3	101.9	101.7	7.52	7.51	7.48	0.93	0.94	0.93	2	2.00
	11:52		Middle	3.0	20.90	20.90		7.67	7.67		33.12	33.12		101.3	101.2		7.45	7.44		0.93	0.93		<2	
18/2/19	16:30	Cloudy	Middle	3.0	19.40	19.40	19.40	7.97	7.97	7.97	32.41	32.41	32.41	96.7	96.7	96.6	7.35	7.35	7.35	3.10	3.06	3.07	3	3.00
	16:32		Middle	3.0	19.40	19.40		7.97	7.97		32.41	32.41		96.5	96.5		7.34	7.34		3.06	3.05		3	
20/2/19	12:00	Fine	Middle	3.0	21.50	21.50	21.60	7.65	7.65	7.67	32.66	32.66	32.66	96.0	96.1	96.1	6.99	6.99	6.99	1.81	1.86	1.84	5	5.50
	12:02		Middle	3.0	21.70	21.70		7.68	7.68		32.66	32.66		96.0	96.4		6.97	7.00		1.84	1.83		6	
22/2/19	9:30	Fine	Middle	3.0	20.30	20.30	20.30	8.07	8.07	8.08	32.02	32.02	32.02	123.3	122.9	123.0	9.22	9.20	9.21	3.15	3.16	3.14	3	3.50
	9:32		Middle	3.0	20.30	20.30		8.08	8.08		32.02	32.02		122.9	123.0		9.20	9.20		3.12	3.12		4	
25/2/19	11:35	Cloudy	Middle	3.0	19.50	19.50	19.50	7.51	7.51	7.52	32.48	32.48	32.48	112.4	112.3	112.5	8.52	8.51	8.53	2.15	2.15	2.11	3	2.50
	11:37		Middle	3.0	19.50	19.50		7.53	7.53		32.48	32.48		112.5	112.6		8.53	8.54		2.09	2.06		2	

Remarks:
Single underline denotes exceedance over Action Level.
Double underline denotes exceedance over Limit Level.



**Water Monitoring Result at P1 - HKCEC Phase I
Mid-Flood Tide**

Date	Time	Weather Condition	Sampling Depth		Water Temperature			pH			Salinity			DO Saturation			DO		Turbidity			Suspended Solids		
			m		°C		-		ppt		%		mg/L		NTU		mg/L							
					Value	Average	Value	Average	Value	Average	Value	Average	Value	Average	Value	Average	Value	Average	Value	Average				
28/1/19	12:00	Fine	Middle	3.0	19.50	19.50	19.60	7.64	7.64	7.63	31.00	31.00	30.99	101.7	107.1	103.1	7.76	7.78	7.76	2.34	2.31	2.30	6	6.00
	12:02		Middle	3.0	19.70	19.70		7.62	7.62		30.98	30.98		101.7	101.8		7.75	7.75		2.26	2.27		6	
30/1/19	14:30	Fine	Middle	3.0	19.30	19.30	19.35	8.27	8.27	8.28	31.02	31.02	31.02	109.3	109.3	109.1	8.38	8.37	8.37	2.17	2.21	2.18	5	4.50
	14:32		Middle	3.0	19.40	19.40		8.29	8.29		31.02	31.02		109.1	108.7		8.36	8.37		2.17	2.18		4	
1/2/19	16:00	Cloudy	Middle	3.0	18.80	18.80	18.80	7.58	7.58	7.61	32.06	32.06	32.07	110.1	109.7	109.3	8.47	8.44	8.40	2.81	2.81	2.84	<2	3.00
	16:02		Middle	3.0	18.80	18.80		7.63	7.63		32.07	32.07		108.8	108.4		8.37	8.33		2.88	2.86		3	
4/2/19	6:21	Foggy	Middle	2.5	19.90	19.90	19.90	8.36	8.36	8.36	30.31	30.31	30.31	81.8	83.6	83.4	6.24	6.37	6.35	5.22	5.08	5.15	2	2.00
	6:22		Middle	2.5	19.90	19.90		8.36	8.36		30.31	30.32		84.4	83.6		6.43	6.37		5.13	5.15		<2	
8/2/19	11:15	Fine	Middle	3.0	21.20	21.20	21.25	7.84	7.84	7.85	31.42	31.42	31.42	104.3	104.0	103.3	7.69	7.64	7.60	1.96	1.99	1.99	4	4.50
	11:17		Middle	3.0	21.30	21.30		7.86	7.86		31.42	31.42		102.4	102.3		7.54	7.53		1.99	2.01		5	
11/2/19	10:30	Cloudy	Middle	3.0	19.20	19.20	19.25	7.83	7.83	7.84	32.21	32.21	32.21	102.7	107.4	102.7	7.83	7.81	7.74	1.15	1.21	1.20	3	3.00
	10:32		Middle	3.0	19.30	19.30		7.84	7.84		32.21	32.21		100.3	100.5		7.65	7.65		1.17	1.26		<2	
13/2/19	13:20	Fine	Middle	3.0	20.90	20.90	21.00	7.77	7.77	7.77	32.53	32.53	32.53	100.9	100.7	100.1	7.42	7.40	7.36	2.90	2.91	2.91	<2	<2
	13:22		Middle	3.0	21.10	21.10		7.76	7.76		32.52	32.52		99.7	99.2		7.33	7.29		2.91	2.91		<2	

Remarks:
Single underline denotes exceedance over Action Level.
Double underline denotes exceedance over Limit Level.



**Water Monitoring Result at P3 - APA
Mid-Flood Tide**

Date	Time	Weather Condition	Sampling Depth		Water Temperature			pH			Salinity		DO Saturation		DO		Turbidity		Suspended Solids					
			m		°C		-		ppt		%		mg/L		NTU		mg/L							
					Value	Average	Value	Average	Value	Average	Value	Average	Value	Average	Value	Average	Value	Average						
28/1/19	12:05	Fine	Middle	3.0	18.70	18.70	18.75	7.93	7.93	7.98	31.07	31.07	31.07	100.1	99.9	100.1	7.76	7.74	7.75	2.41	2.36	2.38	6	6.50
	12:07		Middle	3.0	18.80	18.80		8.03	8.03		31.07	31.07		100.3	100.0		7.77	7.74		2.37	2.38		7	
30/1/19	14:35	Fine	Middle	3.0	18.80	18.80	18.85	8.31	8.31	8.32	31.02	31.02	31.02	107.3	106.7	106.8	8.30	8.25	8.27	2.02	2.02	2.04	5	5.00
	14:37		Middle	3.0	18.90	18.90		8.32	8.32		31.01	31.01		106.0	107.0		8.26	8.28		2.06	2.07		5	
1/2/19	16:05	Cloudy	Middle	3.0	18.30	18.30	18.35	7.69	7.69	7.70	32.02	32.02	32.02	102.8	102.5	102.7	8.36	8.34	8.35	2.93	2.91	2.87	4	4.00
	16:07		Middle	3.0	18.40	18.40		7.71	7.71		32.02	32.02		102.9	102.7		8.37	8.34		2.81	2.82		4	
4/2/19	6:27	Foggy	Middle	2.5	19.70	19.70	19.70	8.35	8.35	8.35	30.23	30.23	30.23	76.7	77.3	76.5	5.85	5.90	5.84	6.67	6.25	6.34	3	2.50
	6:28		Middle	2.5	19.70	19.70		8.34	8.34		30.23	30.23		75.4	76.7		5.75	5.84		6.14	6.28		2	
8/2/19	11:20	Fine	Middle	3.0	20.40	20.40	20.50	7.90	7.90	7.90	31.45	31.45	31.45	100.2	100.0	99.7	7.49	7.48	7.45	1.91	1.83	1.86	3	3.00
	11:22		Middle	3.0	20.60	20.60		7.90	7.90		31.44	31.44		99.1	99.3		7.40	7.42		1.85	1.86		3	
11/2/19	10:35	Cloudy	Middle	3.0	19.10	19.10	19.10	7.86	7.86	7.87	32.22	32.22	32.22	97.4	97.6	97.5	7.44	7.46	7.45	1.34	1.39	1.36	4	3.50
	10:37		Middle	3.0	19.10	19.10		7.87	7.87		32.22	32.22		97.3	97.6		7.44	7.46		1.38	1.33		3	
13/2/19	13:25	Fine	Middle	3.0	20.00	20.00	20.10	7.84	7.84	7.84	32.56	32.56	32.56	97.1	97.4	97.1	7.26	7.29	7.26	2.39	2.49	2.42	<2	2.00
	13:27		Middle	3.0	20.20	20.20		7.83	7.83		32.56	32.56		96.7	97.2		7.23	7.27		2.39	2.42		2	

Remarks:
Single underline denotes exceedance over Action Level.
Double underline denotes exceedance over Limit Level.



**Water Monitoring Result at P4 - SOC
Mid-Flood Tide**

Date	Time	Weather Condition	Sampling Depth		Water Temperature			pH			Salinity			DO Saturation		DO		Turbidity		Suspended Solids				
			m		°C		-		ppt		%		mg/L		NTU		mg/L							
					Value	Average	Value	Average	Value	Average	Value	Average	Value	Average	Value	Average	Value	Average						
28/1/19	12:10	Fine	Middle	3.0	18.40	18.40	18.40	8.10	8.10	8.13	31.09	31.09	31.10	99.5	99.7	99.9	7.76	7.77	7.78	2.64	2.65	2.66	6	7.00
	12:12		Middle	3.0	18.40	18.40		8.15	8.15		31.10	31.10		100.3	100.0		7.81	7.79		2.67	2.68		8	
30/1/19	14:40	Fine	Middle	3.0	18.80	18.80	18.80	8.34	8.34	8.35	31.01	31.01	31.02	106.0	106.0	105.8	8.21	8.21	8.21	1.86	1.88	1.88	3	3.00
	14:42		Middle	3.0	18.80	18.80		8.35	8.35		31.02	31.02		105.0	106.2		8.18	8.23		1.89	1.90		3	
1/2/19	16:10	Cloudy	Middle	3.0	18.30	18.30	18.35	7.77	7.77	7.78	32.04	32.04	32.04	108.0	107.9	107.5	8.38	8.37	8.34	2.72	2.70	2.65	3	3.50
	16:12		Middle	3.0	18.40	18.40		7.79	7.79		32.04	32.04		106.8	107.2		8.29	8.31		2.65	2.52		4	
4/2/19	6:34	Foggy	Middle	2.5	19.90	19.90	19.90	8.35	8.35	8.35	30.31	30.31	30.31	78.3	79.6	79.2	5.95	6.05	6.02	5.26	5.27	5.18	3	3.00
	6:35		Middle	2.5	19.90	19.90		8.35	8.35		30.31	30.31		79.8	78.9		6.07	6.00		5.14	5.05		3	
8/2/19	11:25	Fine	Middle	3.0	20.50	20.50	20.45	7.95	7.95	7.96	31.48	31.48	31.48	99.2	99.1	98.6	7.44	7.43	7.45	2.00	2.00	1.98	4	3.50
	11:27		Middle	3.0	20.40	20.40		7.96	7.96		31.48	31.48		98.2	98.0		7.60	7.34		1.96	1.94		3	
11/2/19	10:40	Cloudy	Middle	3.0	19.00	19.00	19.00	7.90	7.90	7.91	32.25	32.25	32.25	95.6	96.8	96.7	7.32	7.41	7.40	2.36	2.42	2.41	<2	<2
	10:42		Middle	3.0	19.00	19.00		7.91	7.91		32.25	32.25		96.9	97.3		7.41	7.44		2.41	2.46		<2	
13/2/19	13:30	Fine	Middle	3.0	19.90	19.90	19.95	7.87	7.87	7.88	32.59	32.59	32.59	98.2	98.3	97.5	7.37	7.37	7.31	2.02	2.10	2.07	2	2.00
	13:32		Middle	3.0	20.00	20.00		7.89	7.89		32.59	32.59		96.4	96.9		7.22	7.26		2.08	2.06		2	

Remarks:
 Single underline denotes exceedance over Action Level.
 Double underline denotes exceedance over Limit Level.



**Water Monitoring Result at P5 - WCT / RT / IT
Mid-Flood Tide**

Date	Time	Weather Condition	Sampling Depth m	Water Temperature °C		pH		Salinity ppt		DO Saturation %		DO mg/L		Turbidity NTU		Suspended Solids mg/L								
				Value	Average	Value	Average	Value	Average	Value	Average	Value	Average	Value	Average	Value	Average							
28/1/19	12:15	Fine	Middle	3.0	18.50	18.50	18.50	8.23	8.23	8.25	31.13	31.13	31.13	102.0	102.1	102.3	7.94	7.94	7.96	2.54	2.56	2.56	5	5.50
	12:17		Middle	3.0	18.50	18.50	18.50	8.26	8.26	8.25	31.12	31.12	31.13	102.6	102.6	102.3	7.98	7.98	7.96	2.56	2.57	2.56	6	
30/1/19	14:45	Fine	Middle	3.0	18.80	18.80	18.80	8.37	8.37	8.38	31.02	31.02	31.02	103.0	104.9	105.1	8.03	8.12	8.15	1.91	1.89	1.87	4	4.50
	14:47		Middle	3.0	18.80	18.80	18.80	8.38	8.38	8.38	31.02	31.02	31.02	106.3	106.3	105.1	8.22	8.22	8.15	1.78	1.89	1.87	5	
1/2/19	16:15	Cloudy	Middle	3.0	18.30	18.30	18.30	7.86	7.86	7.87	32.01	32.01	32.01	1073.0	107.7	348.7	8.34	8.32	8.32	3.25	3.18	3.19	4	4.50
	16:17		Middle	3.0	18.30	18.30	18.30	7.87	7.87	7.87	32.01	32.01	32.01	106.8	107.1	348.7	8.29	8.31	8.32	3.16	3.16	3.19	5	
4/2/19	6:41	Foggy	Middle	2.5	20.10	20.10	20.10	8.37	8.37	8.37	30.45	30.45	30.45	79.2	79.4	79.6	6.01	6.02	6.04	5.86	5.91	5.84	3	3.50
	6:42		Middle	2.5	20.10	20.10	20.10	8.37	8.37	8.37	30.45	30.45	30.45	80.1	79.7	79.6	6.07	6.06	6.04	6.03	5.55	5.84	4	
8/2/19	11:30	Fine	Middle	3.0	20.30	20.30	20.35	8.00	8.00	8.01	31.46	31.46	31.47	98.2	98.4	98.4	7.36	7.39	7.40	2.22	2.24	2.32	2	2.50
	11:32		Middle	3.0	20.40	20.40	20.35	8.01	8.01	8.01	31.47	31.47	31.47	98.4	98.7	98.4	7.38	7.46	7.40	2.34	2.47	2.32	3	
11/2/19	10:45	Cloudy	Middle	3.0	19.00	19.00	19.00	7.93	7.93	7.93	32.26	32.26	32.26	96.8	97.3	96.9	7.42	7.46	7.42	2.25	2.28	2.26	5	5.50
	10:47		Middle	3.0	19.00	19.00	19.00	7.93	7.93	7.93	32.26	32.26	32.26	97.2	96.3	96.9	7.44	7.37	7.42	2.27	2.25	2.26	6	
13/2/19	13:35	Fine	Middle	3.0	19.80	19.80	19.85	7.94	7.94	7.95	32.56	32.56	32.59	97.6	97.9	97.5	7.35	7.36	7.33	1.92	1.96	1.96	<2	<2
	13:37		Middle	3.0	19.90	19.90	19.85	7.95	7.95	7.95	32.61	32.61	32.59	97.4	97.1	97.5	7.32	7.30	7.33	1.97	1.98	1.96	<2	

Remarks:
Single underline denotes exceedance over Action Level.
Double underline denotes exceedance over Limit Level.



**Water Monitoring Result at RW21-P789 - GEC / CRB / SHK
Mid-Flood Tide**

Date	Time	Weather Condition	Sampling Depth	m	Water Temperature			pH			Salinity			DO Saturation			DO			Turbidity			Suspended Solids		
					°C			-			ppt			%			mg/L			NTU			mg/L		
					Value	Average		Value	Average		Value	Average		Value	Average		Value	Average		Value	Average		Value	Average	
28/1/19	13:00	Fine	Middle	4.0	18.80	18.80	18.85	8.23	8.23	8.26	31.13	31.13	31.13	106.0	105.6	104.6	8.19	8.16	8.08	2.89	2.79	2.82	6	5.50	
	13:02		Middle	4.0	18.90	18.90		8.28	8.28		31.12	31.12		103.0	103.8		7.96	8.01		2.80	2.81		5		
30/1/19	16:00	Fine	Middle	4.0	18.90	18.90	18.90	8.36	8.36	8.37	31.03	31.03	31.03	106.3	106.3	106.2	8.21	8.21	8.20	2.74	2.83	2.82	5	5.00	
	16:02		Middle	4.0	18.90	18.90		8.38	8.38		31.03	31.03		106.1	106.0		8.19	8.19		2.85	2.85		5		
1/2/19	10:40	Cloudy	Middle	4.0	18.60	18.60	18.60	7.88	7.88	7.89	31.91	31.91	31.91	108.4	109.1	108.3	8.38	8.43	8.37	4.75	4.82	4.75	5	5.00	
	10:42		Middle	4.0	18.60	18.60		7.90	7.90		31.90	31.90		107.8	107.7		8.33	8.33		4.73	4.71		5		
4/2/19	4:29	Foggy	Middle	3.5	19.80	19.80	19.80	8.35	8.35	8.35	30.64	30.64	30.64	89.4	90.9	88.9	6.81	6.92	6.77	4.14	3.83	3.90	2	2.00	
	4:30		Middle	3.5	19.80	19.80		8.35	8.35		30.64	30.64		88.0	87.2		6.70	6.64		3.71	3.93		<2		
8/2/19	8:35	Fine	Middle	4.0	21.10	21.10	21.15	7.19	7.19	7.21	31.37	31.37	31.37	101.3	101.3	100.7	7.49	7.49	7.44	2.19	2.08	2.16	4	4.00	
	8:37		Middle	4.0	21.20	21.20		7.22	7.22		31.37	31.37		100.0	100.1		7.38	7.39		2.18	2.17		4		
11/2/19	11:15	Cloudy	Middle	4.0	19.10	19.10	19.15	7.92	7.92	7.93	32.26	32.26	32.26	100.6	100.7	100.1	7.68	7.69	7.65	2.01	2.02	2.02	5	5.00	
	11:17		Middle	4.0	19.20	19.20		7.93	7.93		32.25	32.25		100.0	99.2		7.64	7.57		2.02	2.02		5		
13/2/19	13:50	Fine	Middle	4.0	20.10	20.10	20.10	7.97	7.97	7.98	32.67	32.67	32.68	105.6	104.7	104.2	7.90	7.83	7.79	1.79	1.75	1.75	<2	<2	
	13:52		Middle	4.0	20.10	20.10		7.99	7.99		32.68	32.68		103.3	103.0		7.72	7.70		1.73	1.72		<2		
15/2/19	12:15	Fine	Middle	4.0	20.30	20.30	20.35	7.80	7.80	7.81	32.61	32.61	32.61	100.8	100.5	100.0	7.51	7.48	7.45	1.29	1.26	1.21	2	2.00	
	12:17		Middle	4.0	20.40	20.40		7.82	7.82		32.61	32.61		99.7	99.1		7.42	7.37		1.14	1.13		2		
18/2/19	17:15	Cloudy	Middle	4.0	19.50	19.50	19.50	7.97	7.97	7.98	32.73	32.73	32.74	101.8	101.3	100.9	7.69	7.66	7.63	1.38	1.38	1.38	4	4.00	
	17:17		Middle	4.0	19.50	19.50		7.99	7.99		32.74	32.74		100.2	100.2		7.58	7.58		1.38	1.37		4		
20/2/19	12:15	Fine	Middle	4.0	21.20	21.20	21.30	7.85	7.85	7.87	32.53	32.53	32.54	103.0	102.7	327.2	7.55	7.52	7.43	1.79	1.79	1.82	3	2.50	
	12:17		Middle	4.0	21.40	21.40		7.88	7.88		32.54	32.54		99.9	1003.0		7.31	7.33		1.84	1.85		2		
22/2/19	9:45	Fine	Middle	4.0	20.40	20.40	20.40	8.11	8.11	8.12	32.00	32.00	32.00	118.0	118.9	118.7	8.80	8.88	8.87	3.29	3.25	3.25	3	3.00	
	9:47		Middle	4.0	20.40	20.40		8.12	8.12		32.00	32.00		118.9	119.1		8.88	8.90		3.23	3.21		3		
25/2/19	11:55	Cloudy	Middle	4.0	19.60	19.60	19.60	7.51	7.51	7.53	32.56	32.56	32.56	118.1	117.2	116.0	8.90	8.85	8.75	2.34	2.35	2.34	3	2.50	
	11:57		Middle	4.0	19.60	19.60		7.54	7.54		32.55	32.55		114.4	114.3		8.64	8.62		2.35	2.32		2		

Remarks:
Single underline denotes exceedance over Action Level.
Double underline denotes exceedance over Limit Level.



**Water Monitoring Result at WSD19 - Sheung Wan
Mid-Flood Tide**

Date	Time	Weather Condition	Sampling Depth m	Water Temperature °C		pH		Salinity ppt		DO Saturation %		DO mg/L		Turbidity NTU		Suspended Solids mg/L								
				Value	Average	Value	Average	Value	Average	Value	Average	Value	Average	Value	Average	Value	Average							
28/1/19	14:02	Fine	Middle	4.0	19.00	19.00	19.05	8.10	8.10	8.13	31.10	31.10	31.10	106.9	106.5	105.5	8.23	8.20	8.12	3.14	3.14	3.15	8	8.00
	14:05		Middle	4.0	19.10	19.10	19.05	8.15	8.15	8.13	31.09	31.09	31.10	104.2	104.4	105.5	8.01	8.02	8.12	3.15	3.15	3.15	8	
30/1/19	13:30	Fine	Middle	4.0	19.70	19.70	19.75	7.83	7.83	7.83	30.77	30.77	30.77	105.4	105.6	105.2	8.02	8.04	7.92	3.63	3.61	3.62	6	6.00
	13:32		Middle	4.0	19.80	19.80	19.75	7.82	7.82	7.83	30.76	30.76	30.77	104.8	105.0	105.2	7.64	7.99	7.92	3.62	3.62	3.62	6	
1/2/19	13:15	Cloudy	Middle	3.5	18.20	18.20	18.20	7.16	7.16	7.16	30.80	30.80	30.80	106.5	105.6	105.5	8.20	8.13	8.13	3.83	3.93	3.90	5	5.00
	13:17		Middle	3.5	18.20	18.20	18.20	7.15	7.15	7.16	30.80	30.80	30.80	104.9	105.1	105.5	8.09	8.10	8.13	3.93	3.89	3.90	5	
4/2/19	4:55	Foggy	Middle	3.5	20.00	20.00	20.00	8.23	8.23	8.23	30.44	30.44	30.44	86.9	87.5	87.0	6.60	6.65	6.61	3.23	3.07	3.12	3	3.50
	4:56		Middle	3.5	20.00	20.00	20.00	8.23	8.23	8.23	30.44	30.44	30.44	86.1	87.5	87.0	6.54	6.64	6.61	3.16	3.02	3.12	4	
8/2/19	10:30	Fine	Middle	4.0	20.90	20.90	21.10	7.55	7.55	7.55	31.45	31.45	31.44	106.4	106.1	104.8	7.80	7.75	7.69	2.43	2.33	2.37	3	3.50
	10:32		Middle	4.0	21.30	21.30	21.10	7.54	7.54	7.55	31.43	31.43	31.44	103.5	103.0	104.8	7.62	7.58	7.69	2.36	2.37	2.37	4	
11/2/19	9:45	Cloudy	Middle	3.5	19.40	19.40	19.40	7.63	7.63	7.66	32.50	32.50	32.50	100.6	100.4	100.1	7.64	7.62	7.60	3.70	3.70	3.70	7	7.00
	9:47		Middle	3.5	19.40	19.40	19.40	7.68	7.68	7.66	32.49	32.49	32.50	99.9	99.5	100.1	7.58	7.54	7.60	3.70	3.70	3.70	7	
13/2/19	11:10	Fine	Middle	4.0	20.30	20.30	20.30	7.81	7.81	7.83	30.79	30.79	30.80	103.1	102.9	101.8	7.79	7.75	7.67	3.16	3.18	3.20	4	4.00
	11:12		Middle	4.0	20.30	20.30	20.30	7.85	7.85	7.83	30.80	30.80	30.80	100.6	100.4	101.8	7.58	7.56	7.67	3.21	3.23	3.20	4	

Remarks:
Single underline denotes exceedance over Action Level.
Double underline denotes exceedance over Limit Level.



**Water Monitoring Result at C1 - HKCEC
Mid-Ebb Tide**

Date	Time	Weather Condition	Sampling Depth		Water Temperature		pH			Salinity		DO Saturation		DO		Turbidity		Suspended Solids						
					°C		-			ppt		%		mg/L		NTU		mg/L						
					Value	Average	Value	Average	Value	Average	Value	Average	Value	Average	Value	Average	Value	Average	Value	Average				
28/1/19	21:08	Cloudy	Middle	2.5	17.40	17.40	17.40	8.54	8.54	8.54	31.22	31.22	31.22	97.5	92.8	94.5	6.83	6.50	6.60	3.57	3.30	3.34	6	5.00
	21:09		Middle	2.5	17.40	17.40		8.54	8.54	8.54	31.22	31.22		31.22	94.6		92.9	94.5		6.54	6.52		6.60	
30/1/19	23:38	Cloudy	Middle	2.5	18.30	18.30	18.30	8.29	8.29	8.29	31.01	31.01	31.01	95.7	96.2	95.7	7.07	7.03	7.05	3.08	2.80	2.90	4	4.00
	23:39		Middle	2.5	18.30	18.30		8.29	8.29	8.29	31.01	31.01		31.01	95.7		95.3	95.7		7.07	7.04		7.05	
1/2/19	23:26	Cloudy	Middle	3.0	18.20	18.20	18.20	8.46	8.46	8.46	31.01	31.01	31.01	93.3	96.8	96.1	7.31	7.58	7.52	4.07	3.97	4.09	5	5.00
	23:27		Middle	3.0	18.20	18.20		8.46	8.46	8.46	31.01	31.01		31.01	97.7		96.4	96.1		7.65	7.55		7.52	
4/2/19	1:36	Cloudy	Middle	2.5	19.70	19.70	19.70	8.35	8.35	8.35	30.24	30.24	30.24	78.9	80.7	79.7	6.04	6.17	6.10	3.51	3.32	3.44	3	2.50
	1:37		Middle	2.5	19.70	19.70		8.35	8.35	8.35	30.24	30.24		30.24	80.5		78.7	79.7		6.16	6.02		6.10	
8/2/19	4:30	Misty	Middle	2.5	20.30	20.30	20.30	8.28	8.28	8.28	30.15	30.15	30.15	90.7	91.8	92.6	6.85	6.94	7.00	3.42	3.87	3.58	5	4.50
	4:31		Middle	2.5	20.30	20.30		8.28	8.28	8.28	30.15	30.15		30.15	94.4		93.5	92.6		7.13	7.06		7.00	
11/2/19	16:50	Cloudy	Middle	2.5	18.70	18.70	18.70	8.04	8.04	25.54	32.63	32.63	32.63	98.5	98.4	97.9	7.57	7.56	7.52	1.95	1.96	1.95	<2	2.00
	16:52		Middle	2.5	18.70	18.70		78.04	8.05	25.54	32.63	32.63		32.63	97.5		97.0	97.9		7.49	7.44		7.52	
13/2/19	21:07	Fine	Middle	2.5	18.70	18.70	18.70	8.41	8.49	8.43	31.29	31.29	31.29	88.4	87.3	87.7	6.73	6.64	6.66	1.39	1.33	1.31	<2	≤2
	21:08		Middle	2.5	18.70	18.70		8.41	8.41	8.43	31.29	31.29		31.29	87.7		87.2	87.7		6.64	6.61		6.66	
15/2/19	20:58	Fine	Middle	2.5	19.90	19.90	19.95	8.17	8.17	8.18	33.09	33.09	33.08	106.2	105.5	104.4	7.93	7.90	7.83	1.76	1.79	1.78	<2	≤2
	21:00		Middle	2.5	20.00	20.00		8.19	8.19	8.18	33.06	33.06		33.08	103.6		102.3	104.4		7.75	7.73		7.83	
18/2/19	0:20	Cloudy	Middle	2.5	19.50	19.50	19.50	8.05	8.05	8.06	33.20	33.02	33.07	105.2	104.5	103.9	7.95	7.90	7.85	1.41	1.39	1.39	<2	≤2
	0:22		Middle	2.5	19.50	19.50		8.06	8.06	8.06	33.02	33.02		33.07	103.0		102.7	103.9		7.79	7.76		7.85	
20/2/19	19:15	Cloudy	Middle	2.5	21.20	21.20	21.25	8.08	8.08	8.10	31.89	31.89	31.89	103.8	103.7	103.2	7.64	7.63	7.59	3.08	3.09	3.09	4	4.50
	19:17		Middle	2.5	21.30	21.30		8.12	8.12	8.10	31.89	31.89		31.89	102.9		102.3	103.2		7.58	7.52		7.59	
22/2/19	13:30	Fine	Middle	3.0	21.30	21.30	21.35	7.89	7.89	7.90	32.29	32.29	32.29	125.2	125.3	124.9	9.17	9.18	9.14	3.17	3.19	3.19	<2	≤2
	13:32		Middle	3.0	21.40	21.40		7.91	7.91	7.90	32.29	32.29		32.29	124.3		124.6	124.9		9.10	9.12		9.14	
25/2/19	15:00	Cloudy	Middle	3.0	19.80	19.80	19.80	7.55	7.55	7.56	32.59	32.59	32.59	112.7	112.5	111.8	8.48	8.46	8.41	2.15	2.15	2.15	4	4.00
	15:02		Middle	3.0	19.80	19.80		7.56	7.56	7.56	32.59	32.59		32.59	111.0		111.0	111.8		8.35	8.35		8.41	

Remarks:
Single underline denotes exceedance over Action Level.
Double underline denotes exceedance over Limit Level.



**Water Monitoring Result at P1 - HKCEC Phase I
Mid-Ebb Tide**

Date	Time	Weather Condition	Sampling Depth		Water Temperature		pH			Salinity		DO Saturation		DO		Turbidity		Suspended Solids						
			m		°C		-		ppt		%		mg/L		NTU		mg/L							
					Value	Average	Value	Average	Value	Average	Value	Average	Value	Average	Value	Average	Value	Average						
28/1/19	20:39	Cloudy	Middle	2.5	17.60	17.60	17.60	8.37	8.37	8.37	31.12	31.13	31.13	91.3	94.4	94.5	6.66	6.89	6.90	3.20	3.08	3.03	6	5.50
	20:40		Middle	2.5	17.60	17.60		8.37	8.37		31.13	31.13		95.7	96.5		6.99	7.04		6.90	2.94		2.88	
30/1/19	23:10	Cloudy	Middle	2.5	18.90	18.90	18.90	8.34	8.34	8.34	31.02	31.02	31.02	95.0	96.5	95.1	6.95	7.06	6.95	4.15	3.97	4.08	5	5.00
	23:11		Middle	2.5	18.90	18.90		8.34	8.34		31.02	31.02		95.3	93.5		6.96	6.84		6.95	4.08		4.10	
1/2/19	22:54	Cloudy	Middle	3.0	18.00	18.00	18.00	8.46	8.46	8.46	31.02	31.02	31.02	98.9	97.9	97.1	7.27	7.69	7.51	5.70	5.87	5.86	8	7.50
	22:55		Middle	3.0	18.00	18.00		8.46	8.46		31.02	31.02		96.2	95.5		7.56	7.50		7.51	5.90		5.98	
4/2/19	1:10	Cloudy	Middle	2.5	19.70	19.70	19.70	8.35	8.35	8.35	30.32	30.32	30.32	81.5	81.8	82.4	6.23	6.26	6.30	3.60	3.68	3.48	3	3.00
	1:11		Middle	2.5	19.70	19.70		8.35	8.35		30.32	30.32		83.0	83.1		6.35	6.36		6.30	3.24		3.38	
8/2/19	4:05	Misty	Middle	2.5	20.40	20.40	20.40	8.29	8.29	8.29	30.15	30.15	30.15	93.6	92.3	92.0	7.07	6.79	6.91	2.41	2.59	2.49	3	3.50
	4:06		Middle	2.5	20.40	20.40		8.29	8.29		30.15	30.15		90.8	91.3		6.87	6.90		6.91	2.64		2.33	
11/2/19	16:30	Cloudy	Middle	2.5	18.90	18.90	18.90	7.92	7.92	7.94	32.58	32.58	32.58	103.1	103.7	102.5	7.89	7.92	7.84	1.46	1.47	1.47	4	4.00
	16:32		Middle	2.5	18.90	18.90		7.96	7.96		32.58	32.58		101.8	101.2		7.79	7.75		7.84	1.48		1.48	
13/2/19	20:42	Fine	Middle	2.5	18.50	18.50	18.50	8.39	8.39	8.39	31.28	31.28	31.28	91.6	92.8	92.2	6.98	7.08	7.03	1.92	1.71	1.67	<2	<2
	20:43		Middle	2.5	18.50	18.50		8.39	8.39		31.28	31.28		92.6	91.8		7.06	7.00		7.03	1.53		1.50	

Remarks:
Single underline denotes exceedance over Action Level.
Double underline denotes exceedance over Limit Level.



**Water Monitoring Result at P3 - APA
Mid-Ebb Tide**

Date	Time	Weather Condition	Sampling Depth		Water Temperature		pH			Salinity			DO Saturation		DO		Turbidity		Suspended Solids					
					°C		-			ppt			%		mg/L		NTU		mg/L					
					Value	Average	Value	Average	Value	Average	Value	Average	Value	Average	Value	Average	Value	Average	Value	Average				
28/1/19	20:47	Cloudy	Middle	2.5	17.60	17.60	17.60	8.34	8.34	8.34	31.10	31.10	31.10	94.6	92.4	92.1	6.95	6.79	6.76	3.34	3.52	3.43	6	6.50
	20:48		Middle	2.5	17.60	17.60		8.34	8.34		31.10	31.10		91.2	90.1		6.70	6.60		3.58	3.28		7	
30/1/19	23:15	Cloudy	Middle	2.5	18.30	18.30	18.30	8.33	8.33	8.33	31.02	31.02	31.02	94.0	92.8	93.4	6.93	6.85	6.89	4.18	4.28	4.17	4	4.50
	23:16		Middle	2.5	18.30	18.30		8.33	8.33		31.02	31.02		93.1	93.6		6.87	6.91		4.04	4.16		5	
1/2/19	23:02	Cloudy	Middle	3.0	18.10	18.10	18.10	8.46	8.46	8.46	31.01	31.01	31.01	94.8	95.3	94.9	7.45	7.48	7.46	6.89	6.99	6.85	8	7.50
	23:03		Middle	3.0	18.10	18.10		8.46	8.46		31.01	31.01		94.9	94.5		7.46	7.43		6.73	6.78		7	
4/2/19	1:16	Cloudy	Middle	2.5	19.70	19.70	19.70	8.34	8.34	8.34	30.25	30.25	30.25	79.4	79.0	79.0	6.06	6.03	6.03	3.57	3.61	3.45	3	2.50
	1:17		Middle	2.5	19.70	19.70		8.34	8.34		30.25	30.25		79.3	78.4		6.05	5.99		3.32	3.29		2	
8/2/19	4:11	Misty	Middle	2.5	20.30	20.30	20.30	8.30	8.30	8.30	30.14	30.14	30.14	91.8	92.3	92.2	6.94	3.98	6.22	1.34	1.38	1.31	3	2.50
	4:12		Middle	2.5	20.30	20.30		8.30	8.30		30.14	30.14		92.9	91.8		7.03	6.94		1.27	1.25		2	
11/2/19	16:35	Cloudy	Middle	2.5	18.80	18.80	18.80	7.99	7.99	7.99	32.63	32.63	32.63	100.5	100.2	100.2	7.71	7.69	7.68	1.34	1.32	1.32	4	3.00
	16:37		Middle	2.5	18.80	18.80		7.99	7.99		32.63	32.63		100.0	100.0		7.66	7.66		1.32	1.31		2	
13/2/19	20:48	Fine	Middle	2.5	18.60	18.60	18.60	8.40	8.40	8.40	31.26	31.26	31.26	91.3	91.0	91.2	6.96	6.92	6.94	1.44	1.47	1.53	<2	<2
	20:49		Middle	2.5	18.60	18.60		8.40	8.40		31.26	31.26		91.4	91.0		6.96	6.92		1.61	1.58		<2	

Remarks:
Single underline denotes exceedance over Action Level.
Double underline denotes exceedance over Limit Level.



**Water Monitoring Result at P4 - SOC
Mid-Ebb Tide**

Date	Time	Weather Condition	Sampling Depth		Water Temperature		pH			Salinity		DO Saturation		DO		Turbidity		Suspended Solids						
					°C		-			ppt		%		mg/L		NTU		mg/L						
					Value	Average	Value	Average	Value	Average	Value	Average	Value	Average	Value	Average	Value	Average	Value	Average				
28/1/19	20:55	Cloudy	Middle	2.5	17.50	17.50	17.50	8.32	8.32	8.32	31.12	31.12	31.12	94.8	95.3	94.5	7.10	7.14	7.08	3.55	3.49	3.51	5	4.50
	20:56		Middle	2.5	17.50	17.50		8.32	8.32		31.12	31.12		94.4	93.6		7.06	7.01		3.46	3.53		4	
30/1/19	23:21	Cloudy	Middle	2.5	18.80	18.80	18.80	8.36	8.36	8.36	31.02	31.02	31.02	92.2	92.6	93.6	6.76	6.79	6.86	2.97	3.21	3.14	3	3.50
	23:22		Middle	2.5	18.80	18.80		8.36	8.36		31.02	31.02		94.3	95.2		6.91	6.98		3.17	3.20		4	
1/2/19	23:10	Cloudy	Middle	3.0	18.00	18.00	18.00	8.46	8.46	8.46	31.01	31.01	31.01	98.0	98.6	95.9	7.70	7.59	7.50	5.62	5.38	5.36	9	8.50
	23:11		Middle	3.0	18.00	18.00		8.46	8.46		31.01	31.01		94.1	93.0		7.40	7.31		5.19	5.24		8	
4/2/19	1:24	Cloudy	Middle	2.5	19.90	19.90	19.90	8.35	8.35	8.35	30.32	30.32	30.32	79.0	79.5	79.9	6.02	6.05	6.09	2.89	2.98	2.83	3	3.50
	1:25		Middle	2.5	19.90	19.90		8.35	8.35		30.32	30.32		80.6	80.6		6.15	6.13		2.80	2.66		4	
8/2/19	4:17	Misty	Middle	2.5	20.40	20.40	20.40	8.31	8.31	8.31	30.15	30.15	30.15	96.4	96.5	95.2	7.28	7.29	7.19	1.65	1.28	1.38	4	4.00
	4:18		Middle	2.5	20.40	20.40		8.31	8.31		30.15	30.15		94.7	93.2		7.15	7.03		1.34	1.23		4	
11/2/19	16:40	Cloudy	Middle	2.5	18.80	18.80	18.80	8.01	8.01	8.02	32.63	32.63	32.63	99.6	99.9	99.6	7.64	7.66	7.64	1.63	1.64	1.63	<2	<2
	16:42		Middle	2.5	18.80	18.80		8.02	8.02		32.63	32.63		99.4	99.4		7.63	7.63		1.62	1.61		<2	
13/2/19	20:53	Fine	Middle	2.5	18.70	18.70	18.70	8.40	8.40	8.40	31.28	31.28	31.28	90.1	90.1	90.2	6.85	6.85	6.86	1.69	1.81	1.78	<2	<2
	20:54		Middle	2.5	18.70	18.70		8.40	8.40		31.28	31.28		90.1	90.6		6.85	6.89		1.92	1.71		<2	

Remarks:
Single underline denotes exceedance over Action Level.
Double underline denotes exceedance over Limit Level.



**Water Monitoring Result at P5 - WCT / RT / IT
Mid-Ebb Tide**

Date	Time	Weather Condition	Sampling Depth		Water Temperature		pH			Salinity		DO Saturation		DO		Turbidity		Suspended Solids						
					°C		-			ppt		%		mg/L		NTU		mg/L						
					Value	Average	Value	Average	Value	Average	Value	Average	Value	Average	Value	Average	Value	Average	Value	Average				
28/1/19	21:00	Cloudy	Middle	2.5	17.80	17.80	17.80	8.42	8.42	8.42	31.07	31.07	31.07	91.5	92.0	91.6	6.48	6.51	6.49	3.07	2.92	2.90	6	6.50
	21:01		Middle	2.5	17.80	17.80		8.42	8.42		31.07	31.07		91.5	91.5		6.49	6.49		2.78	2.84		7	
30/1/19	23:30	Cloudy	Middle	2.5	19.00	19.00	19.00	8.37	8.37	8.37	31.02	31.02	31.02	93.9	95.2	93.6	6.85	6.94	6.83	3.76	3.92	3.68	4	3.50
	23:31		Middle	2.5	19.00	19.00		8.37	8.37		31.02	31.02		93.2	92.0		6.80	6.71		3.60	3.44		3	
1/2/19	23:18	Cloudy	Middle	3.0	18.00	18.00	18.00	8.46	8.46	8.46	31.00	31.00	31.00	98.3	94.4	94.5	7.73	7.42	7.42	5.13	5.02	4.99	7	6.50
	23:19		Middle	3.0	18.00	18.00		8.46	8.46		31.00	31.00		92.4	92.7		7.25	7.29		4.88	4.92		6	
4/2/19	1:31	Cloudy	Middle	2.5	20.00	20.00	20.00	8.36	8.36	8.36	30.44	30.44	30.44	79.5	79.7	79.6	6.04	6.06	6.05	3.08	2.96	3.07	<2	2.00
	1:32		Middle	2.5	20.00	20.00		8.36	8.36		30.44	30.44		80.0	79.0		6.08	6.00		3.12	3.11		2	
8/2/19	4:23	Misty	Middle	2.5	20.60	20.60	20.60	8.33	8.33	8.33	30.15	30.15	30.15	90.7	93.2	91.0	6.83	7.02	6.83	1.66	1.80	1.49	3	3.00
	4:24		Middle	2.5	20.60	20.60		8.33	8.33		30.15	30.15		92.1	88.0		6.84	6.63		1.26	1.22		3	
11/2/19	16:45	Cloudy	Middle	2.5	18.70	18.70	18.70	8.03	8.03	8.03	32.63	32.63	32.63	98.9	99.2	98.9	7.60	7.62	7.60	1.38	1.38	1.39	3	2.50
	16:47		Middle	2.5	18.70	18.70		8.03	8.03		32.63	32.63		98.5	98.8		7.57	7.60		1.39	1.40		2	
13/2/19	21:01	Fine	Middle	2.5	18.50	18.50	18.50	8.37	8.37	8.37	31.28	31.28	31.28	89.7	90.4	89.7	6.85	6.90	6.85	1.70	1.91	1.86	<2	<2
	21:02		Middle	2.5	18.50	18.50		8.37	8.37		31.28	31.28		90.1	88.7		6.88	6.77		1.88	1.95		<2	

Remarks:
Single underline denotes exceedance over Action Level.
Double underline denotes exceedance over Limit Level.



**Water Monitoring Result at RW21-P789 - GEC / CRB / SHK
Mid-Ebb Tide**

Date	Time	Weather Condition	Sampling Depth		Water Temperature		pH			Salinity			DO Saturation		DO		Turbidity		Suspended Solids					
					°C		-			ppt			%		mg/L		NTU		mg/L					
					Value	Average	Value	Average	Value	Average	Value	Average	Value	Average	Value	Average	Value	Average	Value	Average				
28/1/19	18:40	Cloudy	Middle	4.0	17.10	17.10	17.10	8.37	8.37	8.37	31.09	31.09	31.09	94.2	91.6	93.2	7.53	7.32	7.45	3.26	3.28	3.33	8	8.00
	18:41		Middle	4.0	17.10	17.10		8.37	8.37		31.09	31.09		92.2	94.8		7.37	7.58		3.37	3.41		8	
30/1/19	20:15	Cloudy	Middle	4.0	18.80	18.80	18.80	8.22	8.22	8.22	31.03	31.03	31.03	92.9	95.9	94.1	6.79	6.99	6.87	1.91	1.89	1.94	3	3.00
	20:16		Middle	4.0	18.80	18.80		8.22	8.22		31.03	31.03		94.8	92.7		6.92	6.76		2.05	1.92		3	
1/2/19	23:53	Cloudy	Middle	4.0	18.20	18.20	18.20	8.36	8.36	8.36	30.77	30.77	30.77	96.9	97.1	97.5	7.60	7.62	7.65	5.61	5.56	5.68	4	4.00
	23:54		Middle	4.0	18.20	18.20		8.36	8.36		30.77	30.77		98.0	97.8		7.69	7.67		5.87	5.69		4	
4/2/19	3:04	Cloudy	Middle	3.5	19.80	19.80	19.80	8.30	8.30	8.30	30.64	30.64	30.64	88.8	89.9	90.1	6.67	6.85	6.84	2.66	2.51	2.42	3	3.50
	3:05		Middle	3.5	19.80	19.80		8.30	8.30		30.64	30.64		91.2	90.4		6.94	6.89		2.29	2.21		4	
8/2/19	5:00	Misty	Middle	3.5	20.40	20.40	20.40	8.14	8.14	8.14	29.83	29.83	29.83	92.6	92.9	92.8	7.00	7.02	7.01	1.60	1.54	1.68	4	4.00
	5:01		Middle	3.5	20.40	20.40		8.14	8.14		29.83	29.83		93.0	92.5		7.03	6.99		1.73	1.85		4	
11/2/19	17:20	Cloudy	Middle	3.5	19.00	19.00	19.00	8.01	8.01	8.02	32.35	32.35	32.36	100.9	100.8	100.1	7.76	7.72	7.68	1.06	1.08	1.08	4	3.50
	17:22		Middle	3.5	19.00	19.00		8.02	8.02		32.37	32.37		100.0	98.6		7.67	7.55		1.09	1.09		3	
13/2/19	21:40	Fine	Middle	3.5	18.50	18.50	18.50	8.28	8.28	8.28	30.24	30.24	30.24	75.4	78.9	79.1	5.79	6.06	6.07	1.36	1.28	1.28	<2	<2
	21:41		Middle	3.5	18.50	18.50		8.28	8.28		30.24	30.24		81.5	80.5		6.26	6.18		1.25	1.23		<2	
15/2/19	21:40	Fine	Middle	3.5	20.00	20.00	20.00	8.19	8.19	8.20	33.02	33.02	33.02	102.5	102.2	101.5	7.67	7.65	7.60	0.92	0.89	0.88	<2	<2
	21:42		Middle	3.5	20.00	20.00		8.20	8.20		33.02	33.02		100.2	100.9		7.52	7.55		0.88	0.82		<2	
18/2/19	21:30	Cloudy	Middle	3.5	19.70	19.70	19.70	8.01	8.01	8.02	33.03	33.03	33.04	100.6	100.0	99.8	7.58	7.51	7.51	1.59	1.59	1.60	4	4.00
	21:32		Middle	3.5	19.70	19.70		8.02	8.02		33.04	33.04		99.4	99.1		7.48	7.46		1.60	1.60		4	
20/2/19	17:15	Cloudy	Middle	3.5	21.30	21.30	21.35	8.08	8.08	8.09	31.78	31.78	31.78	100.6	100.0	100.2	7.40	7.36	7.37	2.46	2.36	2.39	6	5.50
	17:17		Middle	3.5	21.40	21.40		8.09	8.09		31.77	31.77		100.0	100.0		7.36	7.36		2.37	2.38		5	
22/2/19	14:00	Fine	Middle	3.5	20.50	20.50	20.55	8.05	8.05	8.05	32.41	32.41	32.41	117.3	117.4	117.4	8.72	8.72	8.72	4.03	4.00	4.03	3	3.50
	14:02		Middle	3.5	20.60	20.60		8.04	8.04		32.41	32.41		117.4	117.3		8.71	8.71		4.06	4.02		4	
25/2/19	15:15	Cloudy	Middle	3.5	19.60	19.60	19.60	7.61	7.61	7.62	32.45	32.45	32.45	114.4	114.2	113.2	8.65	8.63	8.56	1.80	1.82	1.83	4	3.50
	15:17		Middle	3.5	19.60	19.60		7.63	7.63		32.45	32.45		112.3	112.0		8.49	8.46		1.84	1.85		3	

Remarks:
Single underline denotes exceedance over Action Level.
Double underline denotes exceedance over Limit Level.



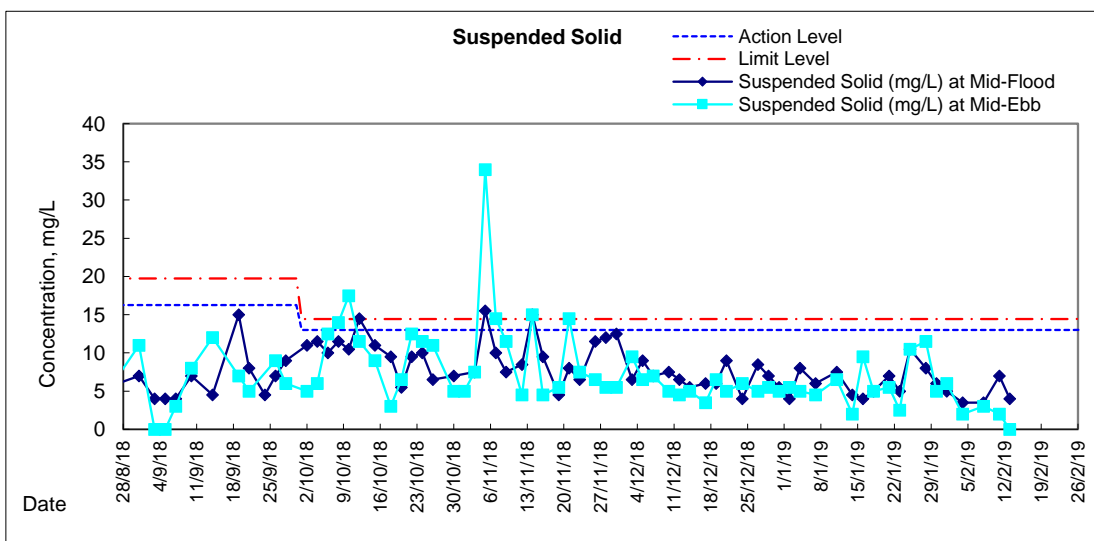
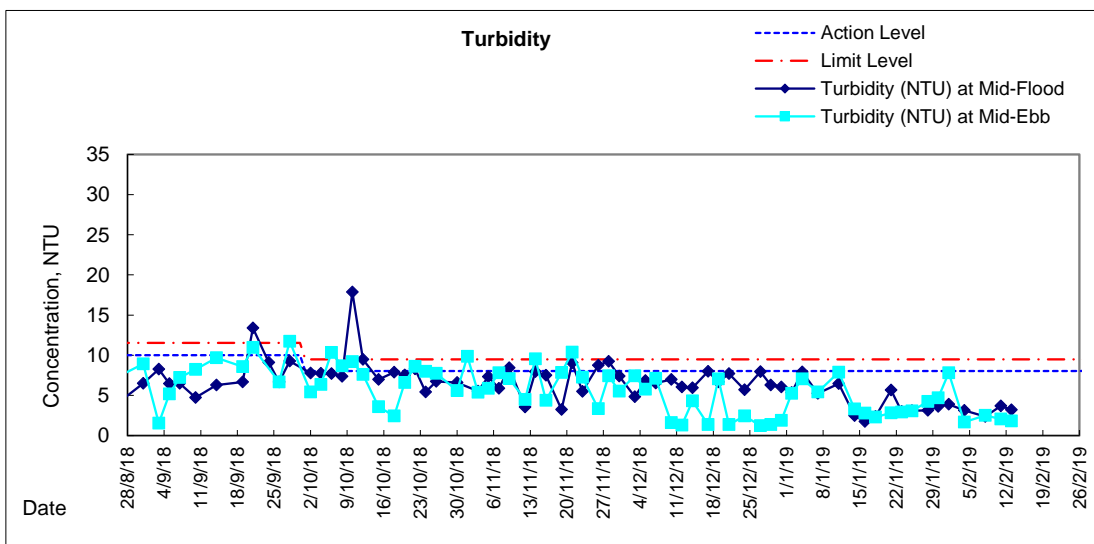
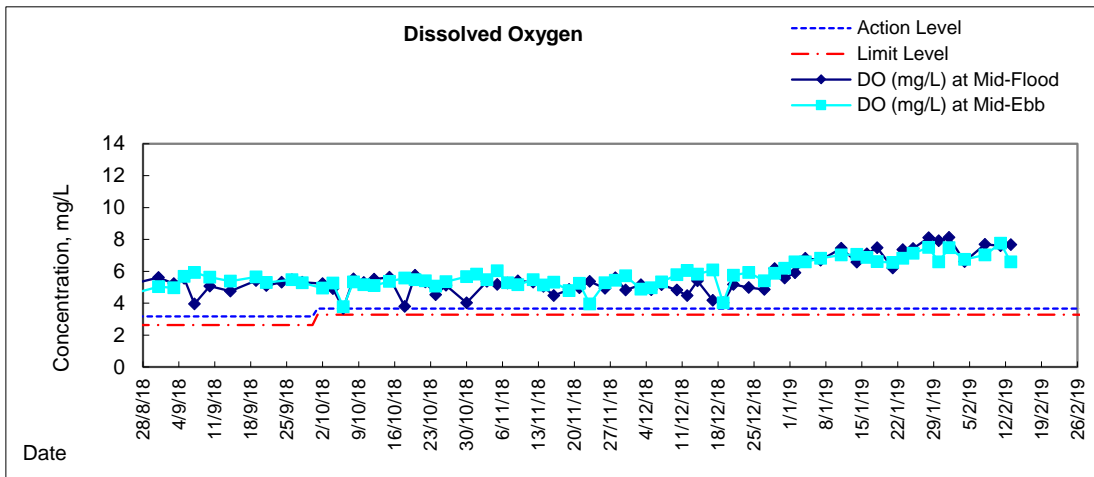
**Water Monitoring Result at WSD19 - Sheung Wan
Mid-Ebb Tide**

Date	Time	Weather Condition	Sampling Depth		Water Temperature		pH			Salinity			DO Saturation		DO		Turbidity		Suspended Solids					
					°C		-			ppt			%		mg/L		NTU		mg/L					
					Value	Average	Value	Average	Value	Average	Value	Average	Value	Average	Value	Average	Value	Average	Value	Average				
28/1/19	19:35	Cloudy	Middle	3.5	17.20	17.20	17.20	8.28	8.28	8.28	30.65	30.65	30.65	92.8	94.0	93.7	7.43	7.52	7.49	4.43	4.05	4.25	11	11.50
	19:36		Middle	3.5	17.20	17.20		8.28	8.28		30.65	30.65		94.2	93.6		7.53	7.49		4.21	4.30		12	
30/1/19	22:10	Cloudy	Middle	3.5	19.10	19.10	19.10	8.29	8.29	8.29	30.79	30.79	30.79	93.0	94.7	93.2	6.57	6.69	6.58	4.45	4.57	4.69	5	5.00
	22:11		Middle	3.5	19.10	19.10		8.29	8.29		30.79	30.79		94.0	91.0		6.64	6.43		4.87	4.85		5	
1/2/19	21:12	Cloudy	Middle	4.0	18.30	18.30	18.30	8.21	8.21	8.21	30.55	30.55	30.55	97.4	95.6	95.5	7.63	7.49	7.48	7.97	7.96	7.83	6	6.00
	21:13		Middle	4.0	18.30	18.30		8.21	8.21		30.55	30.55		94.4	94.6		7.39	7.41		7.67	7.71		6	
4/2/19	23:31	Cloudy	Middle	4.0	19.90	19.90	19.90	8.15	8.15	8.15	29.91	29.91	29.91	89.0	88.1	88.4	6.79	6.72	6.74	1.76	1.81	1.70	2	2.00
	23:32		Middle	4.0	19.90	19.90		8.15	8.15		29.91	29.91		88.4	88.0		6.74	6.71		1.59	1.62		<2	
8/2/19	1:31	Misty	Middle	4.0	20.70	20.70	20.70	8.15	8.15	8.15	29.46	29.46	29.46	93.6	93.4	93.3	7.06	7.03	7.03	2.48	2.63	2.51	3	3.00
	1:32		Middle	4.0	20.70	20.70		8.15	8.15		29.46	29.46		93.4	92.8		7.04	6.99		2.66	2.27		3	
11/2/19	14:50	Cloudy	Middle	4.0	19.30	19.30	19.35	7.86	7.86	7.88	32.46	32.46	32.46	103.0	102.7	102.0	7.85	7.80	7.75	2.10	2.08	2.07	2	2.00
	14:52		Middle	4.0	19.40	19.40		7.89	7.89		32.46	32.46		101.1	101.2		7.67	7.68		2.04	2.06		2	
13/2/19	18:43	Fine	Middle	4.0	18.50	18.50	18.50	8.24	8.24	8.24	31.18	31.18	31.18	85.4	85.7	86.3	6.52	6.54	6.59	1.87	1.82	1.83	<2	<2
	18:44		Middle	4.0	18.50	18.50		8.24	8.24		31.18	31.18		86.9	87.3		6.63	6.66		1.81	1.83		<2	

Remarks:
Single underline denotes exceedance over Action Level.
Double underline denotes exceedance over Limit Level.

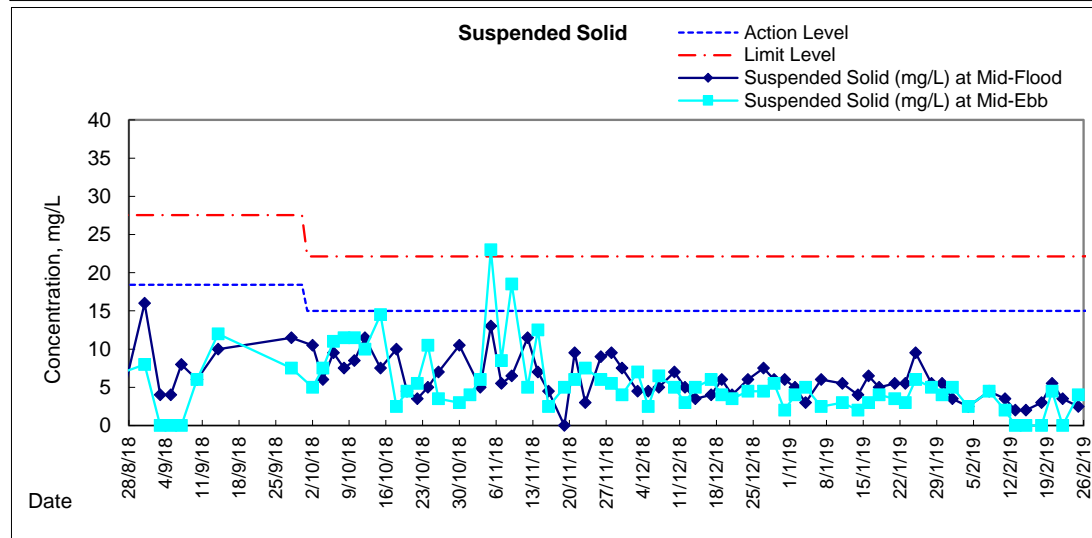
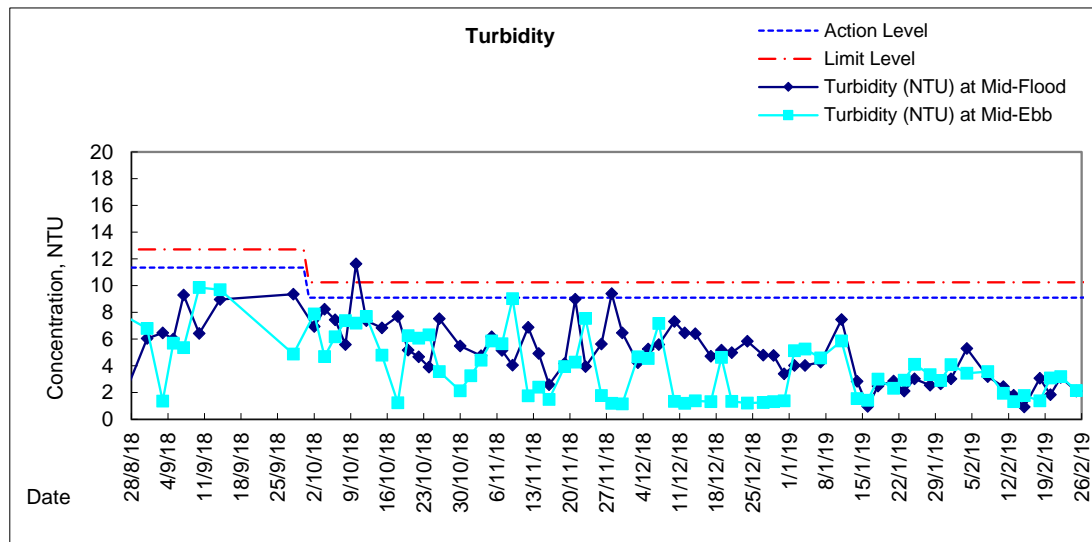
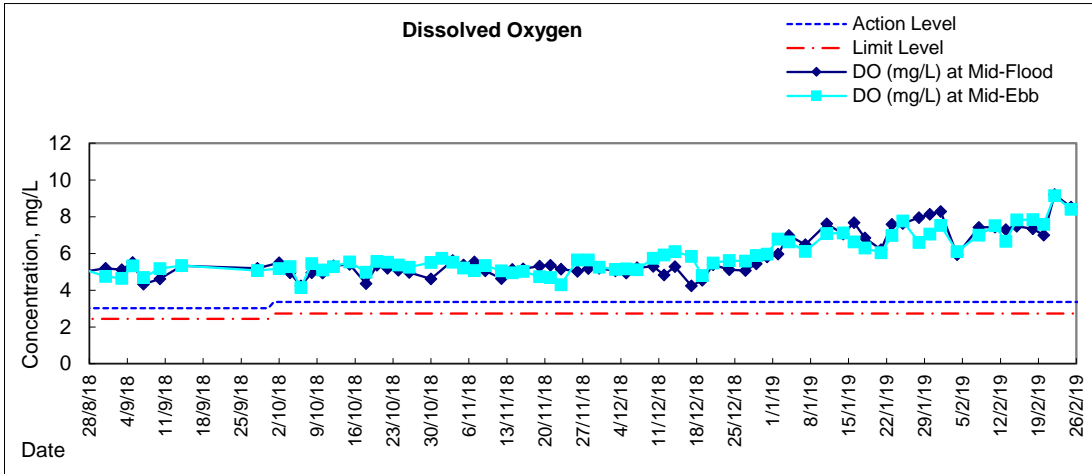


Graphic Presentation of Water Quality Result of WSD19 - Sheung Wan



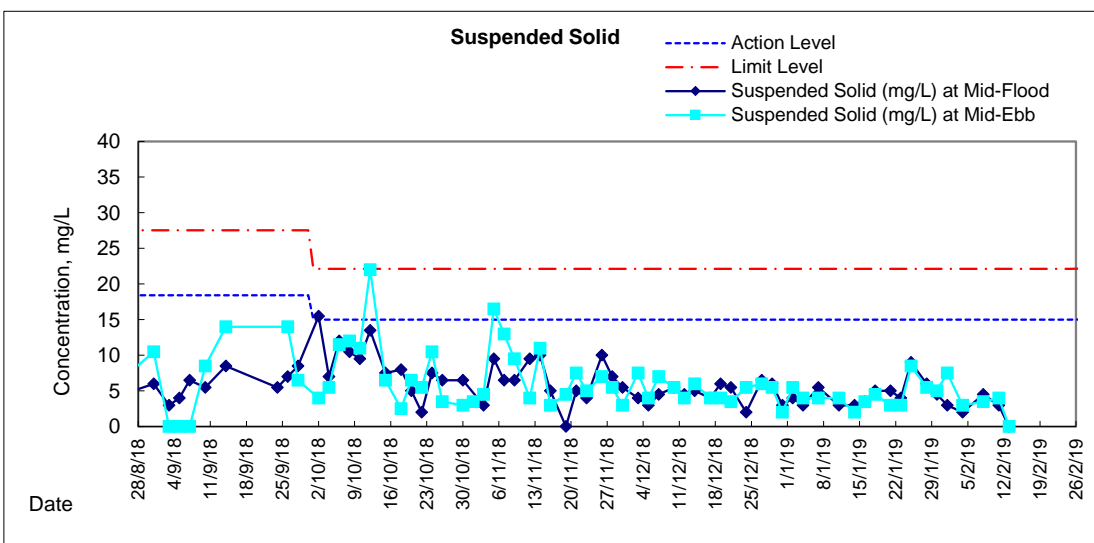
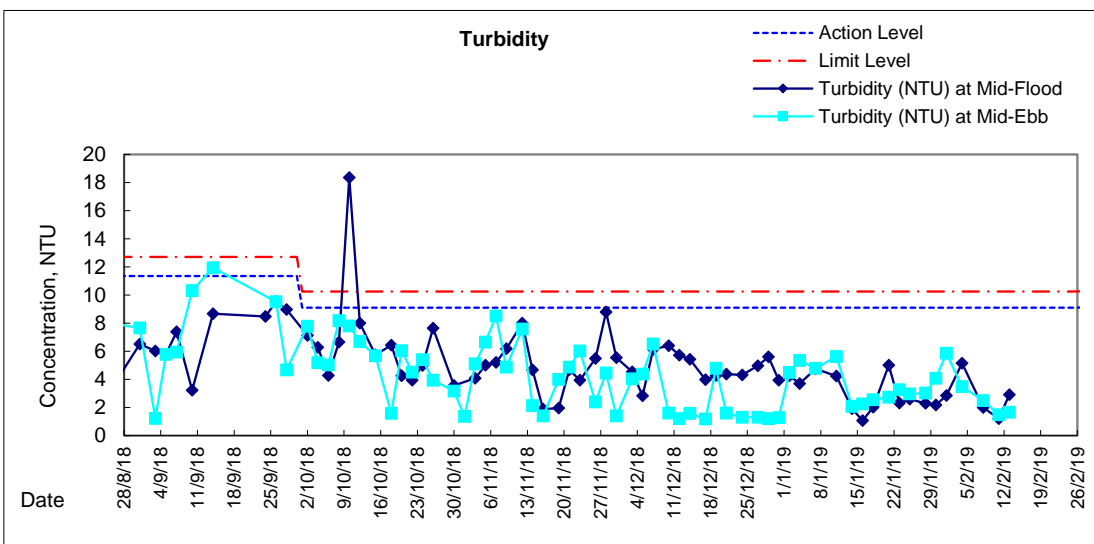
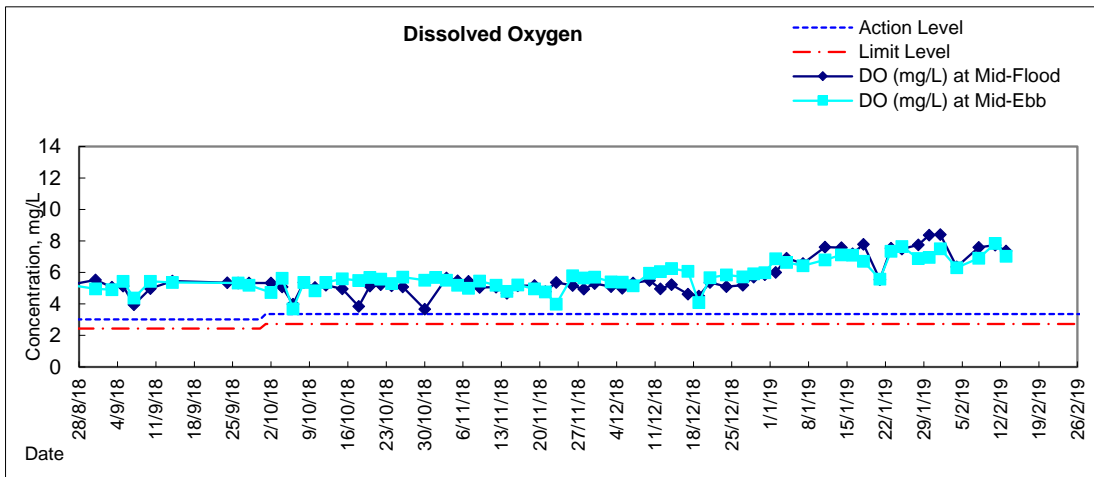


Graphic Presentation of Water Quality Result of C1 - HKCEC



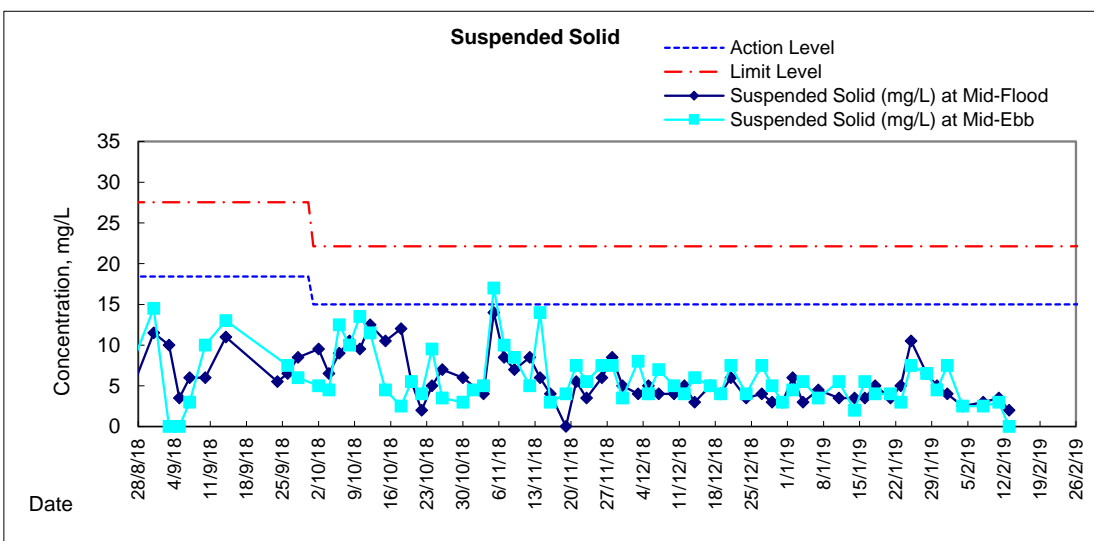
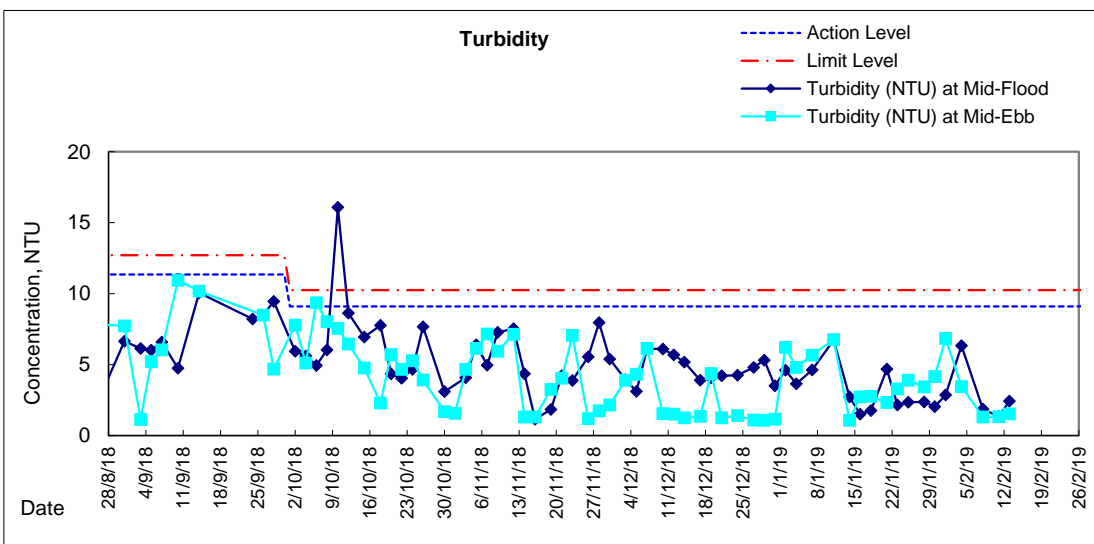
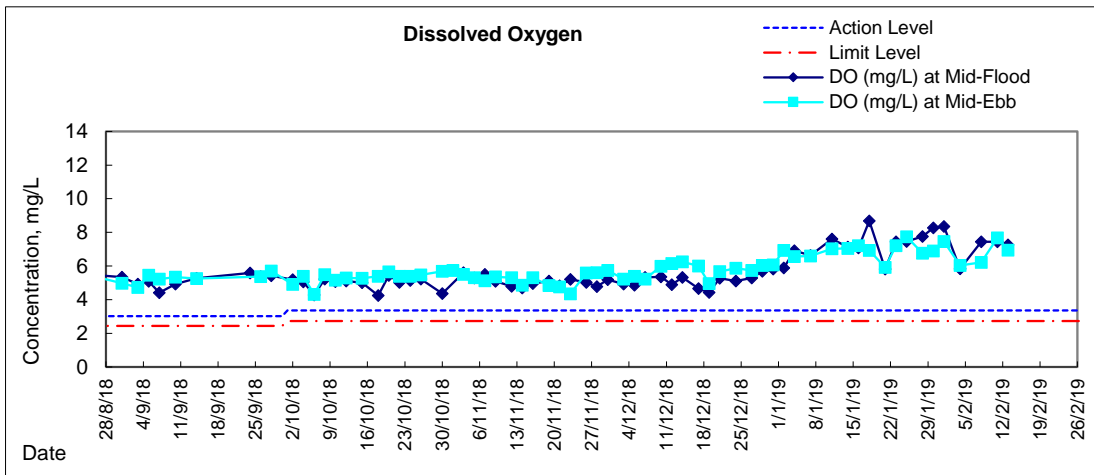


Graphic Presentation of Water Quality Result of P1 - HKCEC Phase I



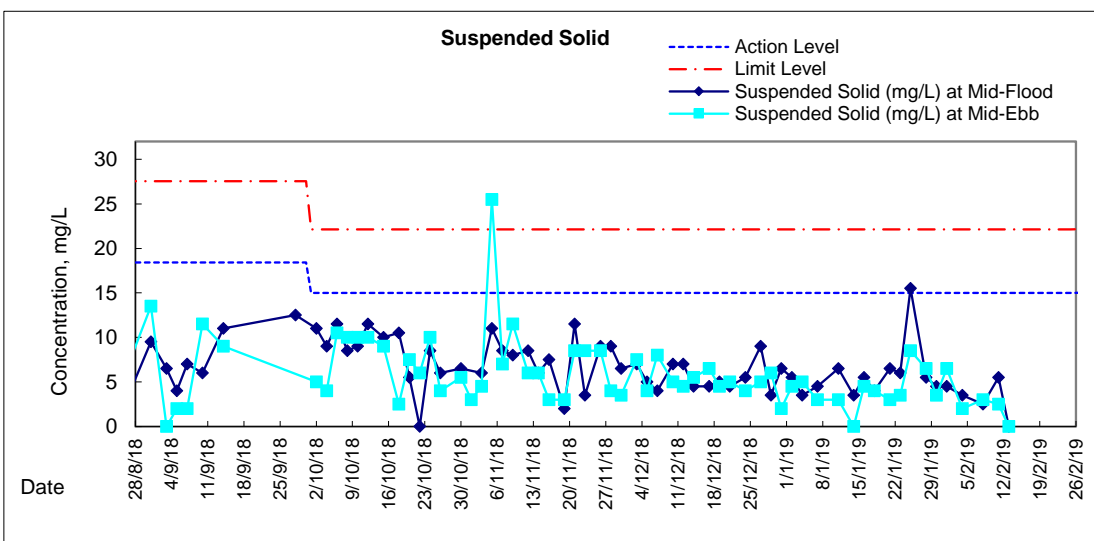
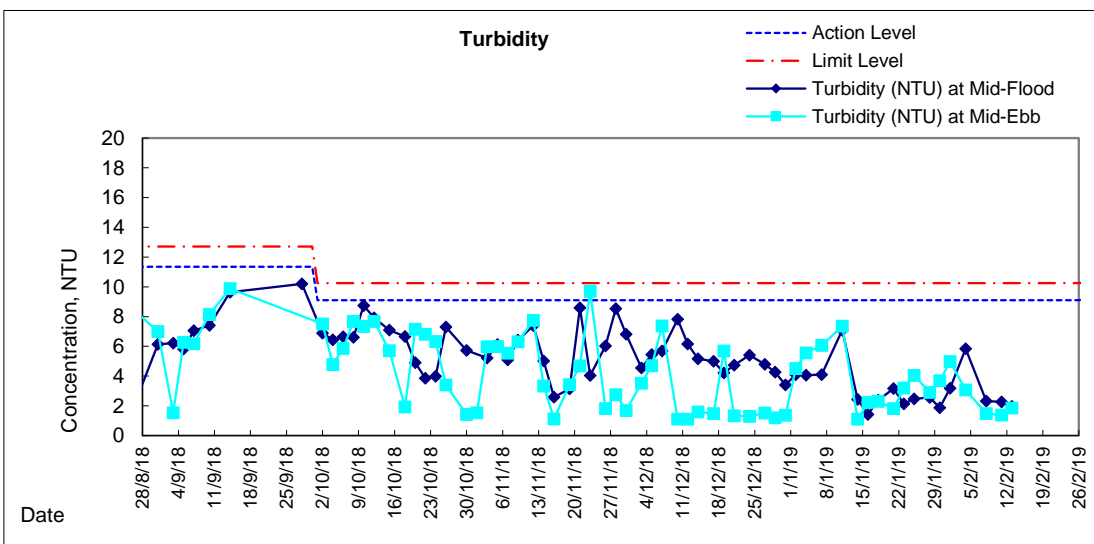
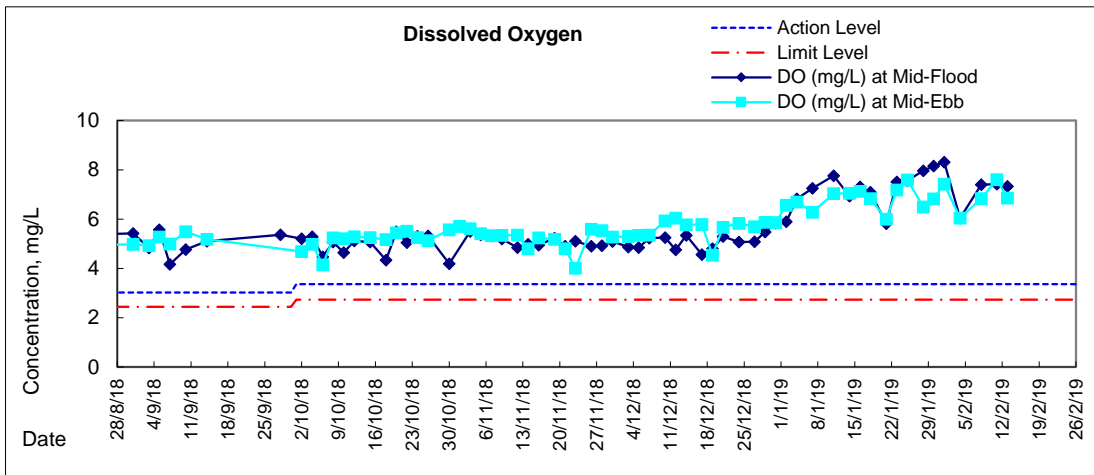


Graphic Presentation of Water Quality Result of P3 - APA



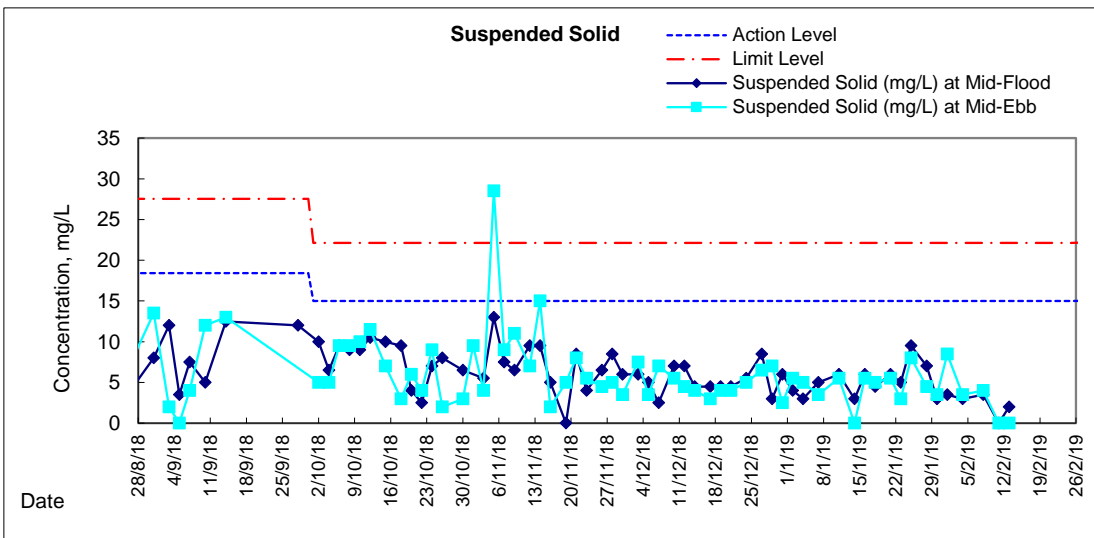
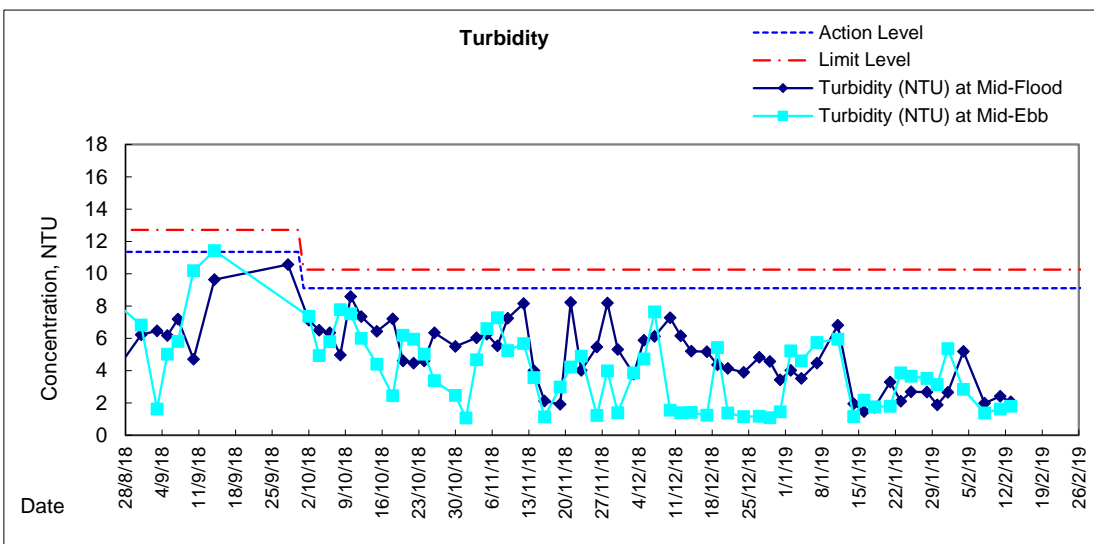
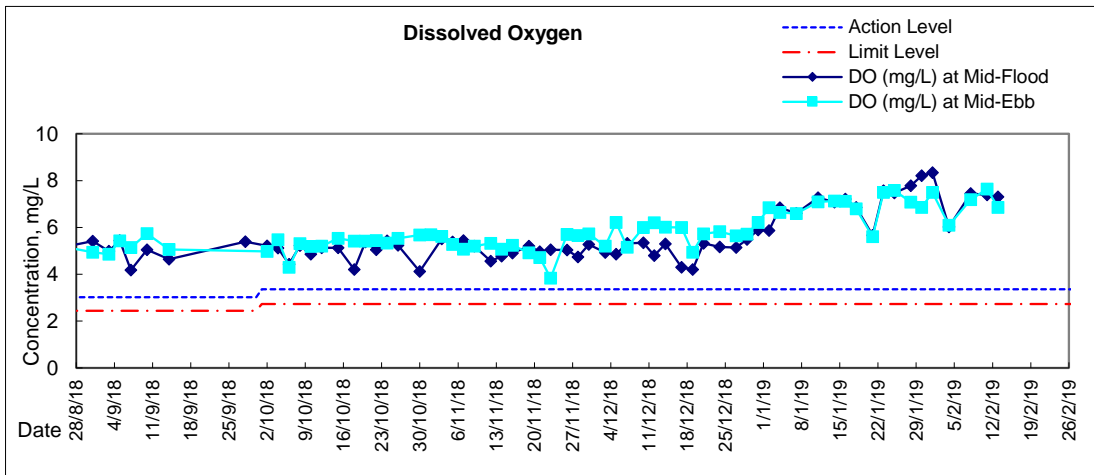


Graphic Presentation of Water Quality Result of P5 - WCT / RT / IT





Graphic Presentation of Water Quality Result of P4 - SOC





Graphic Presentation of Water Quality Result of RW21-P789 - GEC/CRC/SHK

